

O o
O o

une **o**range



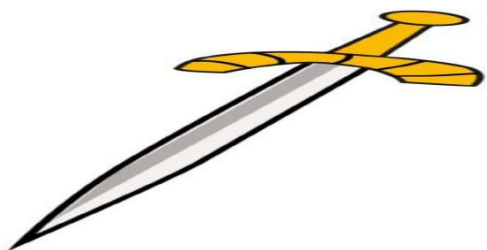
au
au

des ch**a**ussures



eau
eau

un bat**e**au



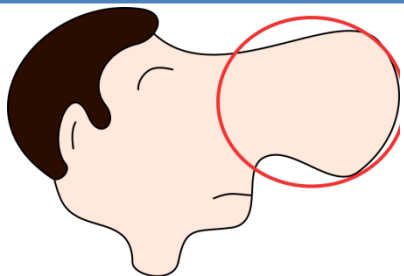
é
é

une **é**pée



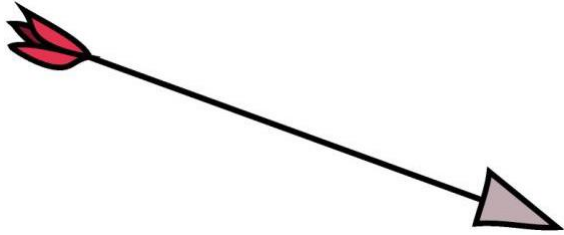
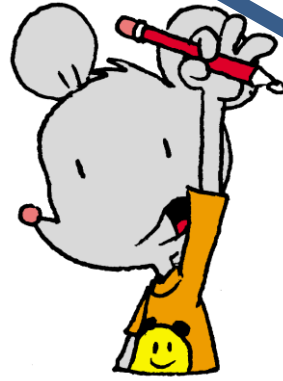
er
er

un roch**er**



ez
erz

le n**ez**



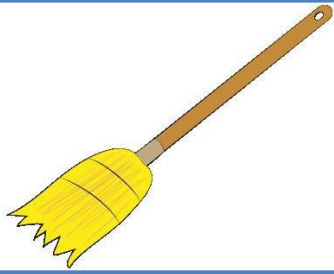
e' e'

une flèche



e> e>

la forêt



ai
ai

un balai



ei
ei

une reine



et
et

un bonnet



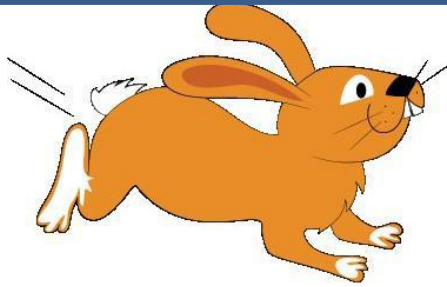
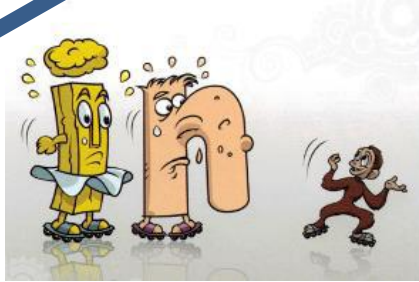
e + ●
e + ●

le bec



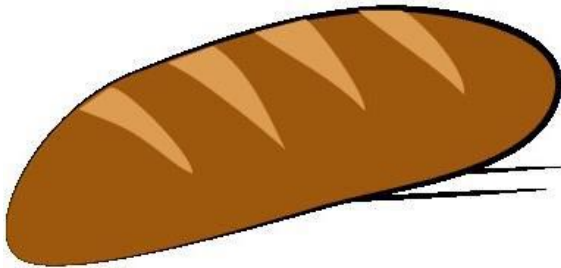
e + ● ●
e + ● ●

une échelle



in
in

un lapin



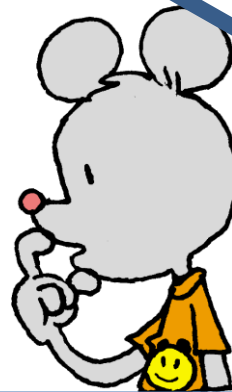
ain
ain

le pain



ein
ein

la peinture



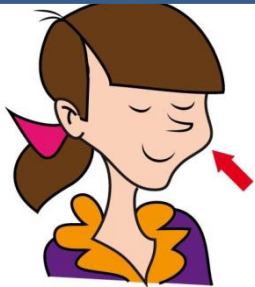
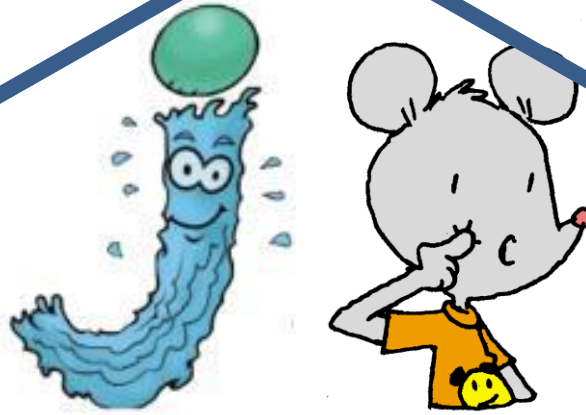
G g
g g

un gâteau



gu
gu

une guitare



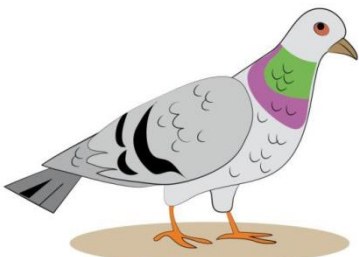
J j

la **j**oue



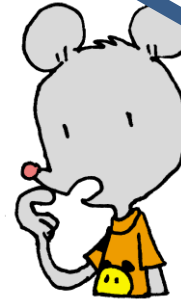
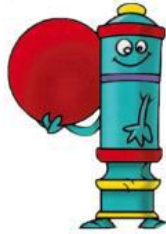
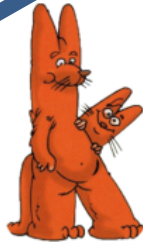
G g

une **g**irafe



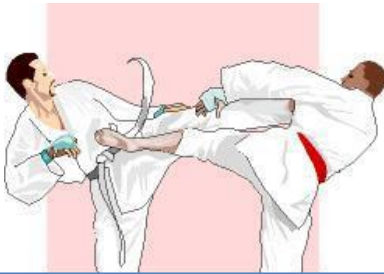
ge

un **g** pigeon



C c
C c

un **c**rab



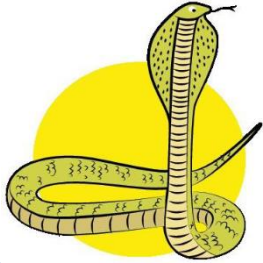
K k
K k

le **k**araté



qu
qu

un **qu**masque



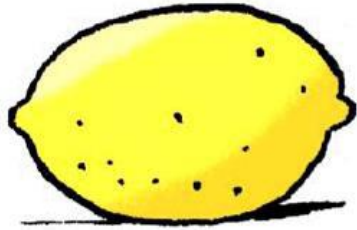
S s

un **s**erpent



SS
ss

une **tasse**



c c
c c

un citron



c
c

un garçon



Z z
Z z

Zorro



S s

une maison